

The Black Diamond Blackberry

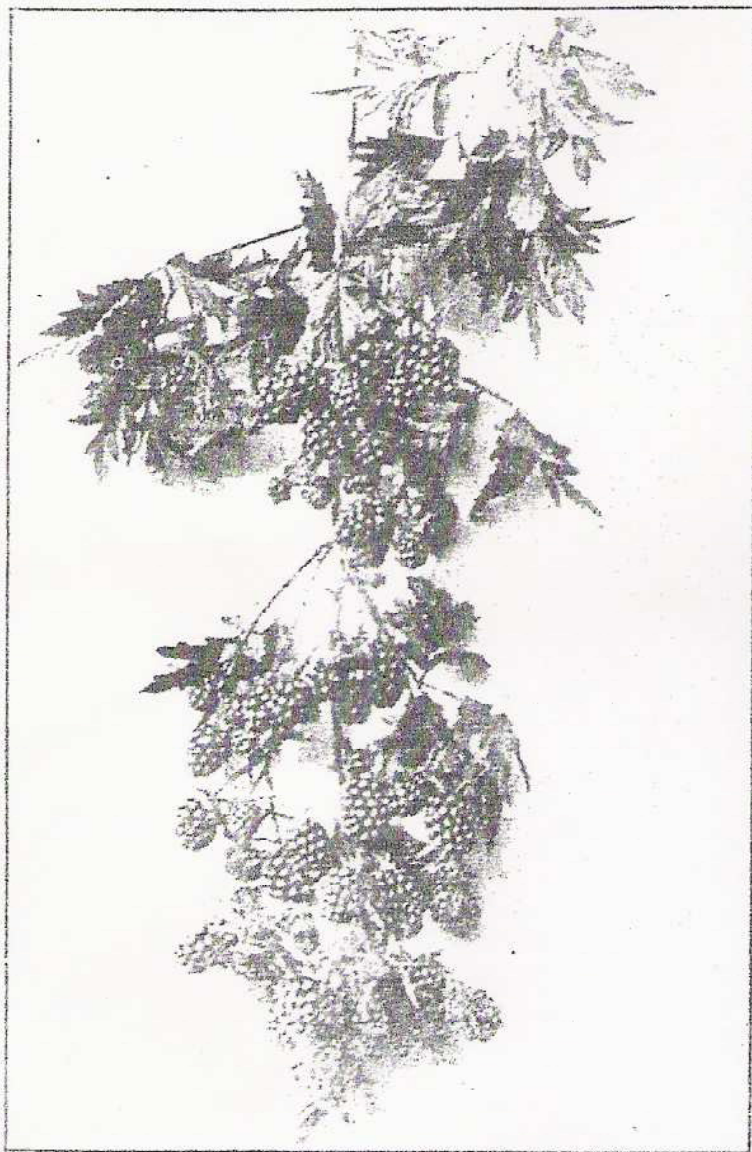
Originated by Geo. H. Liepe, Cologne, N. J.

THE BLACK DIAMOND BLACKBERRY was originated by me some years ago from the seed of the old Evergreen, a variety of the Cut Leaf class of Blackberries. The plants are very vigorous and stocky, thus enabling them to carry to maturity their immense loads of perfect fruit. The foliage remains remarkably green till late in autumn. It is also free from rust, and is not troubled with borers or rose scale.

THE FRUIT. The fruit is jet black and firm, and will not soften either on the bush or after it has been picked. It has an exceptionally fine flavor, spicy



and melting. The berry is about the size of the Erie or Ohmer, an abundant bearer; frequently perfecting as many as 2000 berries on one vine and frequently as many as nine quarts have been gathered from a single vine. The accompanying cut gives but a hint as to its productiveness.



EASILY HARVESTED

The berries hang in large drooping clusters, well elevated above the bush, and in gathering the fruit the pickers do not come in contact with the thorns as is the case with other varieties. The plants grow to considerable size and form hedge-like rows—but no clusters of fruit are hedged in; all are easily gathered from the outside of the bush.

SHIPPING QUALITY.

In shipping quality it is far above all others. The Black Diamond can be shipped long distances, being a hard, jet black berry that will remain firm and glossy for a week after picking. This berry always finds a ready market, as its season is later than that of any other Dewberry or Blackberry, and therefore always sells at the highest prices obtainable for such fine fruit. Its season commences August 1st, and continues to September 1st.

CULTURE. The Black Diamond is very easily grown, adapted as it is to a great variety of soils. It will thrive well on poor, sandy land and yield heavy crops where nothing else will grow.

The young canes droop to the ground, Dewberry-like, and are tied to 3-ft. stakes, or wires. Culture is the same as with ordinary Blackberry.

OUTLASTS ANY OTHER. Most Blackberries decline in productiveness after the fourth or fifth year. The Black Diamond will bear well for 20 years. I have a field of Black Diamond now in its 9th year, bearing its best crop thus far, and all are strong, healthy vines.

TESTIMONIALS

I give the following unsolicited Testimonials from a well-known fruit grower and from a commission merchant to attest to the value of this berry

Manufacturers of Choice American Wines

Propagator of Grape Vines and Small Fruit Plants

OFFICE OF

Cologne Vineyards

HENRY PFEIFFER, Prop.

Dealer in General Nursery Stock

Cologne, Atlantic Co., N.J., Aug. 15th, 1908.

Mr. Geo. H. Liepe, Cologne, N.J.

Dear Sir:—

I wish to say to you that I had the pleasure this morning of walking through a part of your field of Black Diamond berries, just adjoining my pear orchard. And I must say it is a sight worth travelling a thousand miles to see. The immense masses of perfect fruit literally covering each and every one of the exceptionally large and healthy vines is a sight never to be forgotten. I undertook to count the berries on one of the average plants. Well! I counted up to 2000 and then gave it up, as I found it too much of a job. If I were in the Blackberry growing business, the Black Diamond would be my berry exclusively. The beautiful jet black color of the ripe fruit, its great firmness, and exceptional good quality certainly makes it the most desirable berry for the consumer, while these qualities, together with its immense productiveness, make it invaluable to the grower.

I am indeed glad you will have plants for sale this season, so as to give others a chance to also grow this most wonderful fruit.

Wishing you the success you deserve for originating this valuable berry, I remain

Very respectfully yours,

HENRY PFEIFFER.

Long Distance Telephone

Established 1887

H. C. VOGEL & CO.

Wholesale Dealers In

Fruit and Produce

General Commission Merchants

340 WASHINGTON ST., N.Y.

New York, August 17th, 1908.

Mr. Geo. H. Liepe, Cologne, N.J.

Dear Sir:—

We beg to enclose check for your shipments of Black Diamond Blackberries for the week ending August 15th, 1908.

We are pleased to say that your Black Diamond Blackberries are giving excellent satisfaction to our trade this season, as well as they did other years. We find that there is a steady increased demand from our customers for this particular berry as it excels all others in the market at this time of the year, owing to its shipping qualities, as well as its glossy black appearance. It is also such a desirable berry because it ripens when all others are about done. Once a customer buys them he will not be without them.

We are sorry to say that we cannot fill all our orders for this berry, as the demand is much larger than the supply. We could use to good advantage anywhere from two hundred to three hundred crates daily at a high figure to fulfill the wants of our trade.

So let them come along every day. We remain,

Yours very truly,

H. C. VOGEL & CO.

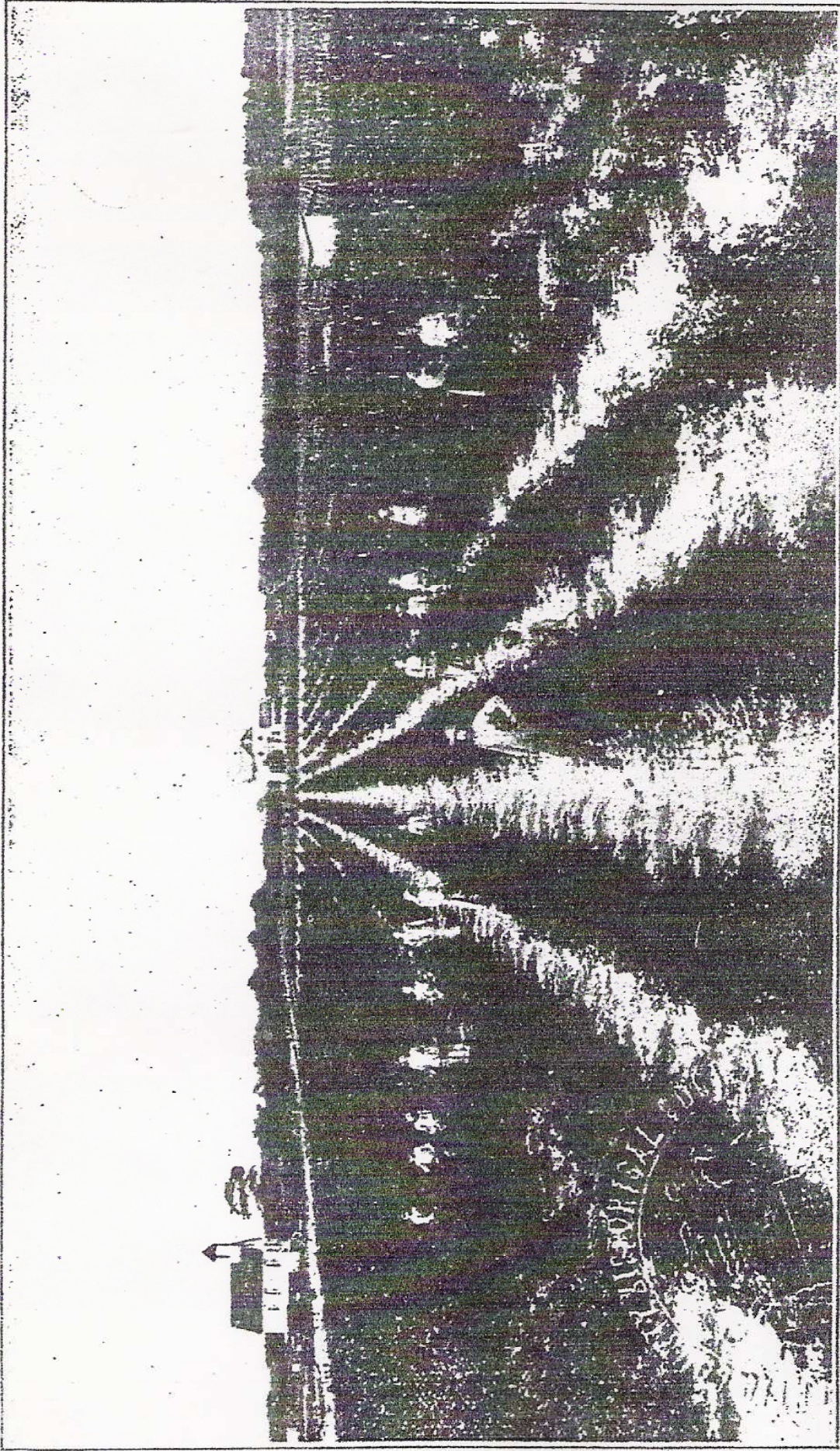
I have never sold plants of this variety before, but am now offering them at the following prices:

Per Dozen, \$1.50

Per Hundred, \$5.00

Per Thousand, \$25.00

GEO. H. LIEPE : : Cologne, New Jersey



A FIELD OF BLACK DIAMOND BLACKBERRIES